

WATER METER

Ultrasonic type

- Type - one beam (1B)
- Compact [DUSMCW] and remote [DUSMRW] versions
- Range of dimensions DN 32 to DN 200
- Accuracy of measurement class B according to ISO 4064-1
- Temperature of measured fluid to 50°C
- Pressure up to 1.6 MPa
- Flow sampling period 1s
- Electrical outputs pulse and current
- Interface optical probe, RS 232, GSM module
- Data storage data archive
- Power source Li battery 3.6V, 16Ah, lifetime 6 to 8 years
- Protection class IP67 / IP68 in remote version



Delta Flowtech

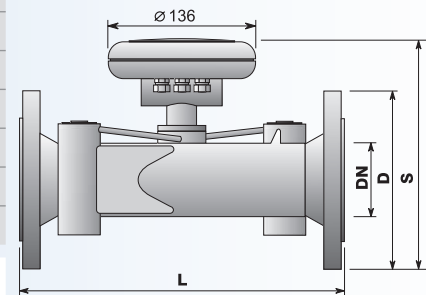


TECHNICAL DATA

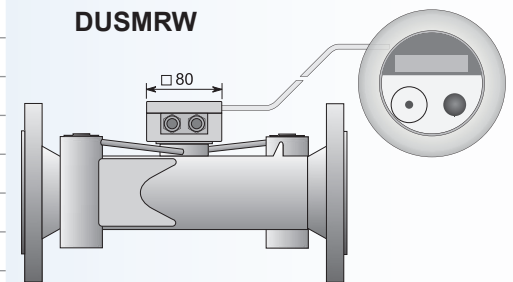
Dn Size [mm]	Max Flow [m³/h]	Nominal Flow [m³/h]	Trans Flow [m³/h]	Min Flow [m³/h]
32	12	6	0.48	0.12
40	20	10	0.8	0.2
50	30	15	3	0.45
65	50	25	5	0.75
80	80	40	8	1.2
100	120	60	12	1.8
125	200	100	20	3
150	300	150	30	4.5
200	360	250	50	7.5

Nominal pressure PN	16
Accuracy class	ISO 4064-1 "B"
Temperature of measured fluid	0 to 50°C
Ambient temperature	0 to 50°C
Flow-rate sampling period	1s
Display unit	Single-line 8-digit LC display
Power supply	Li battery 3.6v/16Ah, lifetime 6 to 8 years
Protection class	IP 67
Pressure loss	less than 0.1bar nominal flow rate
Outputs	passive pulse U = 5 to 30V, I _{max} = 10ma
Optional accessories	displayed units - gal, GPM passive current output 4 to 20mA, U _{max} = 24V communication interface M-Bus storage of measured data optical interface, GSM communication remote electronic unit flow sensor in IP68 design [with remote electronic unit] pressure measurement in piping meter version for drinking water

DUSMCW



DUSMRW



BASIC DIMENSIONS

DN	32	40	50	65	80	100	125	150	200
L [mm]	260	300	300	300	350	350	350	350	350
s [mm]	190	198	208	225	237	253	280	307	352
D [mm]	140	150	165	185	200	220	250	285	340
weight [kg]	4.5	7	10	11	15	17.5	22.5	26	36.5