

WATER METERS

Woltmann High Temperature type



Delta Flowtech

- MID R80 Approved
- Working Pressure: 16 Bar
- Dry Dial [Hermetic seal]
- For hot (130°C) water
- Epoxy Powder Coated
- IP68 register
- High overload capability
- Real performances exceed EEC and ISO standards
- Pulsed outputs available (To suit, please contact us)
- Large easy to read dial
- Up to three pulsers may be fitted without breaking approval seal
- Register may be rotated through 360°
- For horizontal installation



TECHNICAL DATA

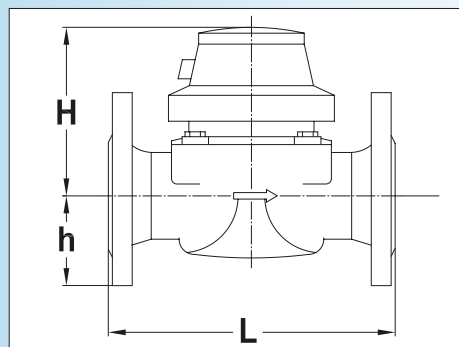
Part No.	Dn Size [mm]	Max Flow [m³/h]	Nominal Flow [m³/h]	Trans Flow [m³/h]	Min Flow [m³/h]	Pulse Options* [litres per pulse]
D50WHT	50	30	15	3	0.45	100-1000
D65WHT	65	50	25	5	0.75	100-1000
D80WHT	80	80	40	8	1.2	100-1000
D100WHT	100	120	60	12	1.8	100-1000
D125WHT	125	200	100	20	3.0	100-1000
D150WHT	150	300	150	30	4.5	1000-10000
D200WHT	200	500	250	50	7.5	1000-10000

* Reed switch operates between 0 -24 vdc. Current max 0.2 amps.

* Pulse options - 1 x Opto OD, 2 x Reed RD.

DIMENSIONS

Part No.	Dn Size [mm]	Length L [mm]	Height H [mm]	Diameter ^h Outer [mm]	Bolt Circle [centres]	Bolt Diameter	Weight [kg]
D50WHT	50	200	225	165	125	4xM16	16.3
D65WHT	65	200	242	185	145	4xM16	17
D80WHT	80	225	255	200	160	8xM16	18
D100WHT	100	250	265	220	180	8xM16	22.8
D125WHT	125	250	275	250	210	8xM16	28.3
D150WHT	150	300	325	285	240	8xM20	46
D200WHT	200	350	352	340	295	12xM20	59.6



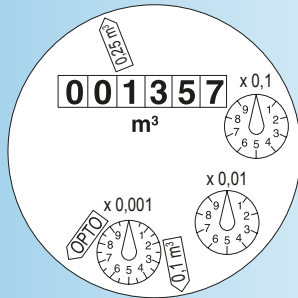
Delta Flowtech Unit 7, Bruff Industrial Estate, Longley Green, Worcestershire WR8 9AH - UK

Tel: (+44) 0845 862 5553 | Fax: 0845 862 5554 | Email: info@deltaflowtech.com | W: deltaflowtech.com

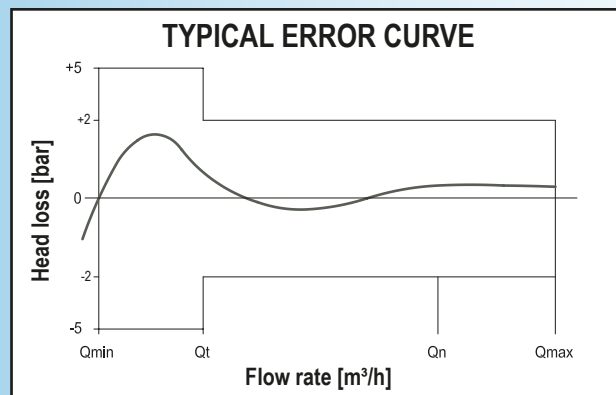
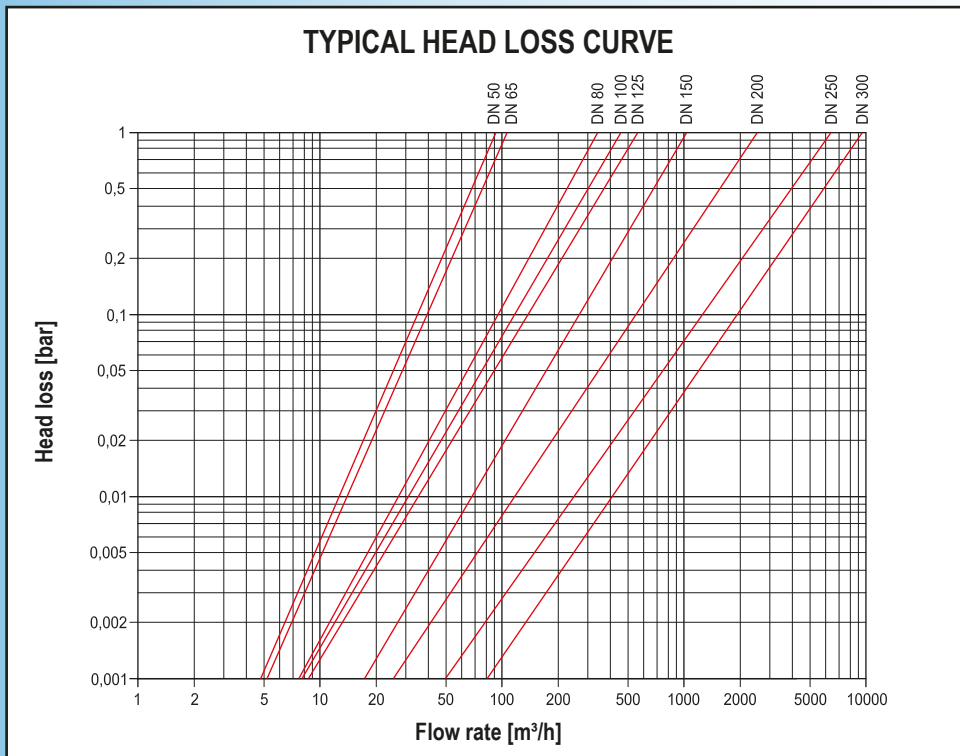
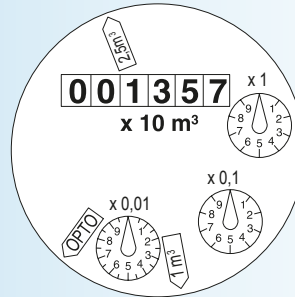


DIALS

D50WHT to D125WHT



D50WHT to D200WHT



All sizes are approximate and are given for guidance only.
 Products and specifications may be subject to change from those shown without notice.