

# HEAT METERS

## In-Line Mounted Compact Chilled (Cooling Systems)



- MID Approved
- EEC Class C Approve
- BMS Output [Optional]
- Pulsed Output [Kw/Hr] Or M-Bus Output
- 3 Versions: 0.6m³/Hr, 1.5m³/Hr Or 2.5m³/Hr
- Battery Operated [6 Year Life]
- IP54 Protection Rating
- Vertical Or Horizontal Mounting
- Temperature Range: 3 – 90°C
- Ambient Temperature: 0 – 55°C

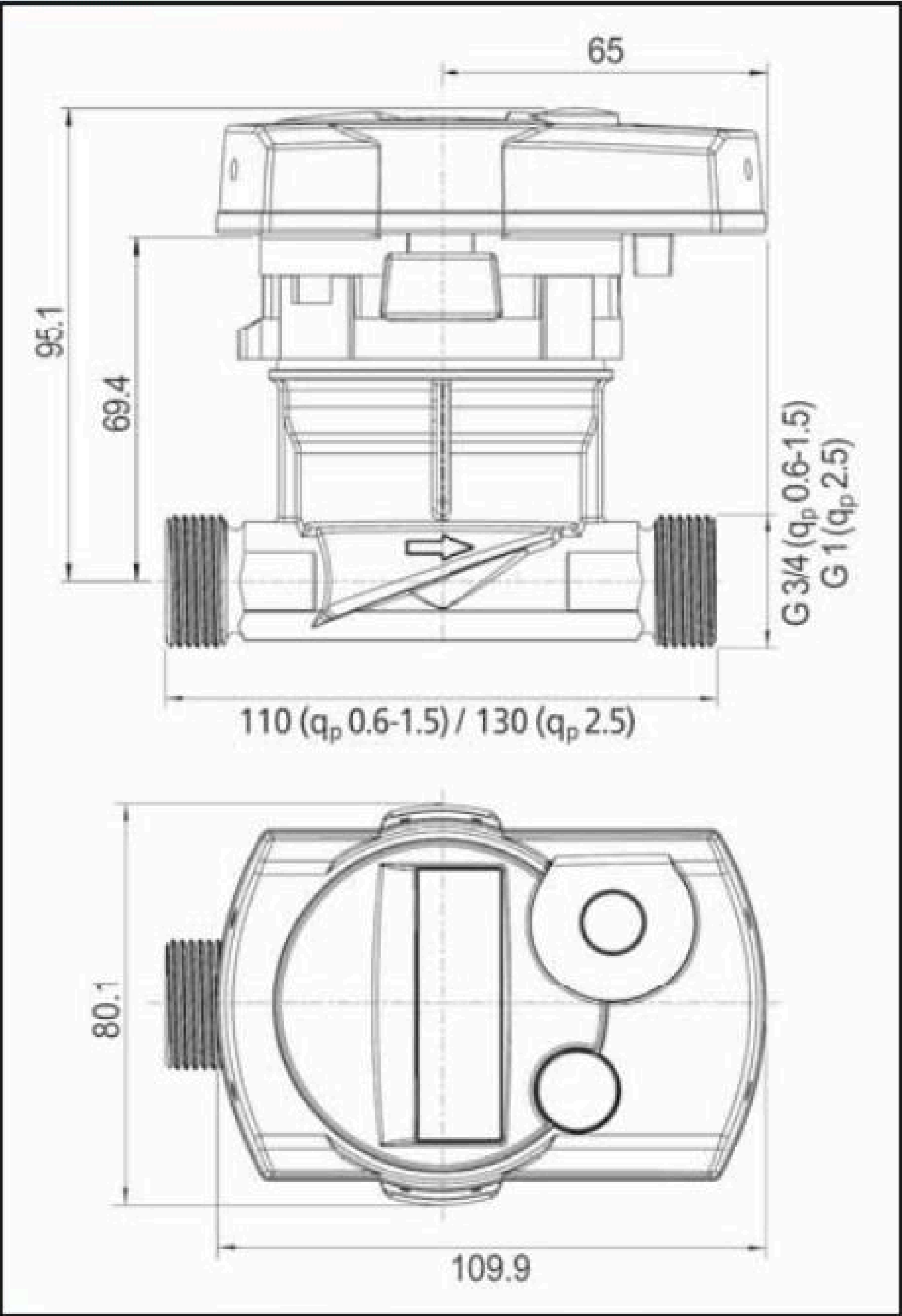


### Technical Data

Part No.	Dn Size [mm]	Max Flow [m³/h]	Nominal Flow [m³/h]	Trans Flow [l/h]	Min Flow [l/h]	Pulse Options [kW/hr per pulse]
DHMC 0.6 PO	20	1.2	0.6	6	2.5	1
DHMC 0.6 Mbus	20	1.2	0.6	6	2.5	N/A
DHMC 1.5 PO	20	3.0	1.5	15	3	1
DHMC 1.5 Mbus	20	3.0	1.5	15	3	N/A
DHMC 2.5 PO	25	5.0	2.5	25	5	1
DHMC 2.5 Mbus	25	5.0	2.5	25	5	N/A

### DIMENSIONS

Nominal flow	m³/h	0.6	1.5	2.5
Installation length - flow sensor	m³/h	110	110	130
External thread flow sensor		G¾	G¾	G1
Calculator housing	mm	80.1 x 109.9		
Height from pipe centre	mm	69.4		
Height with calculator attached	mm	95.1		



Installation In RETURN FLOW



# HEAT METERS

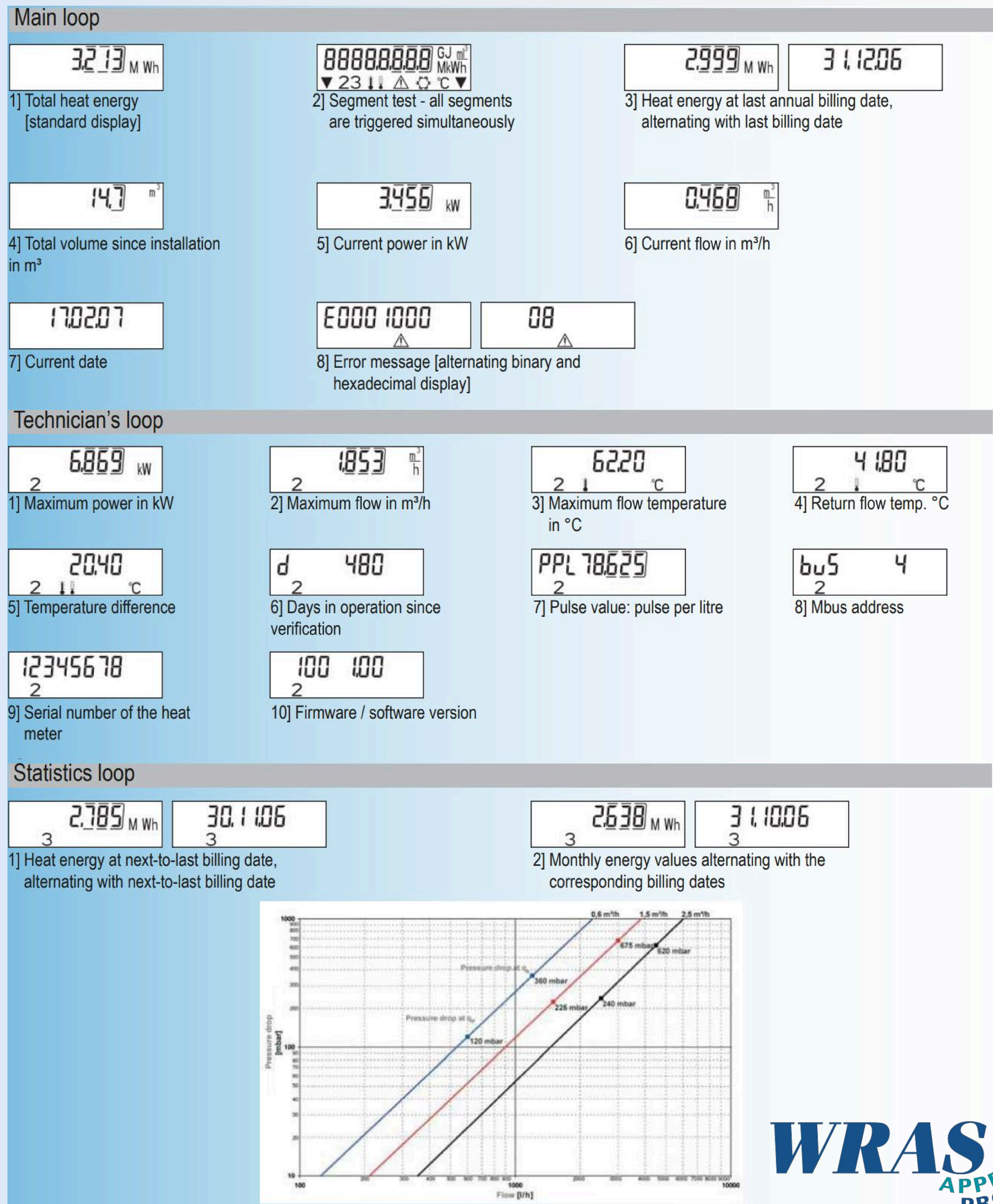
## In-Line Mounted Compact Chilled (Cooling Systems)



### The Informative Menu

The individual loops are called up using the operating key.

After one minute of non-use, the display returns to the standard display: 'accumulated heat energy'.



All sizes are approximate and are given for guidance only.

Products and specifications may be subject to change from those shown without notice.