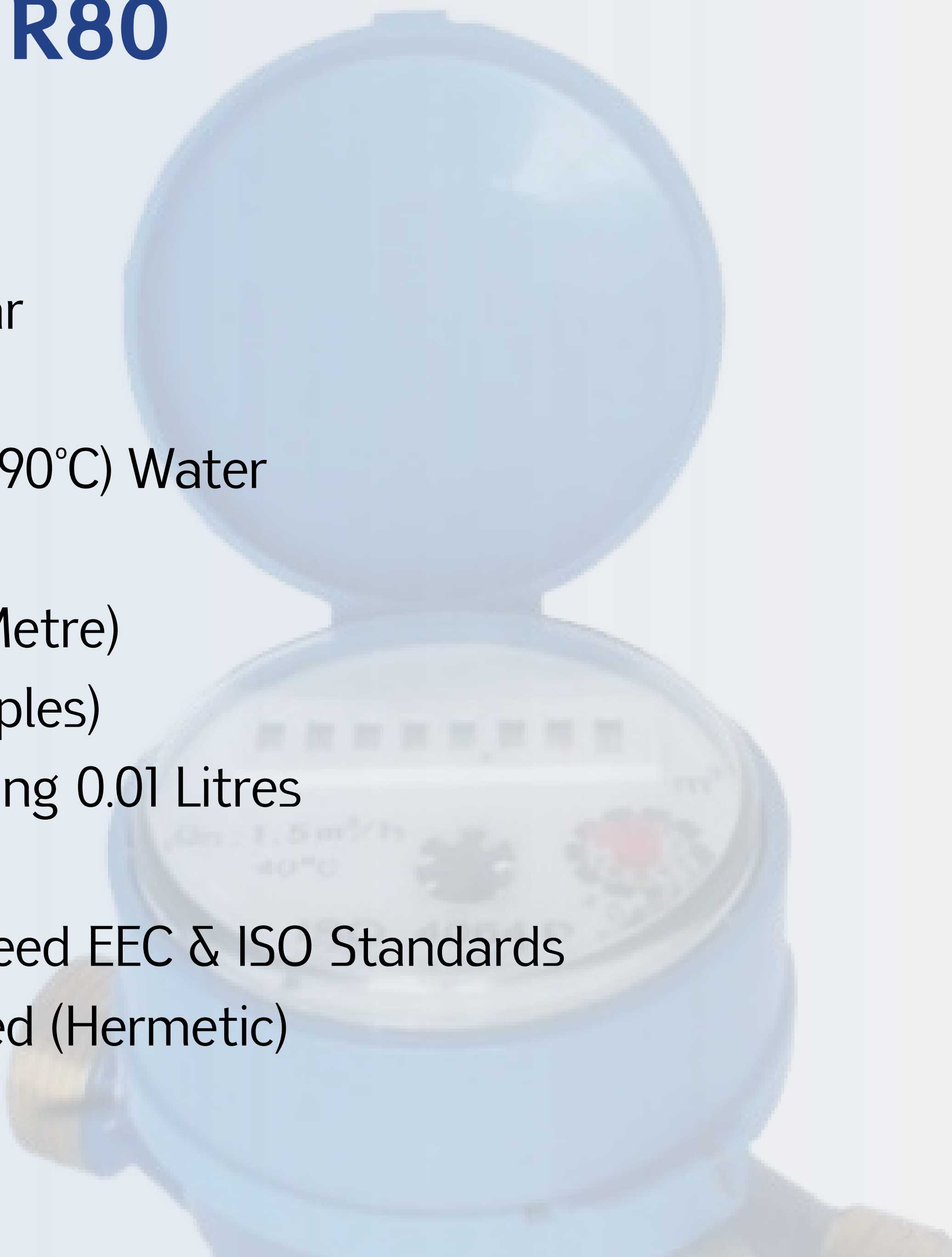


# WATER METERS

## Single Jet - Mid R80

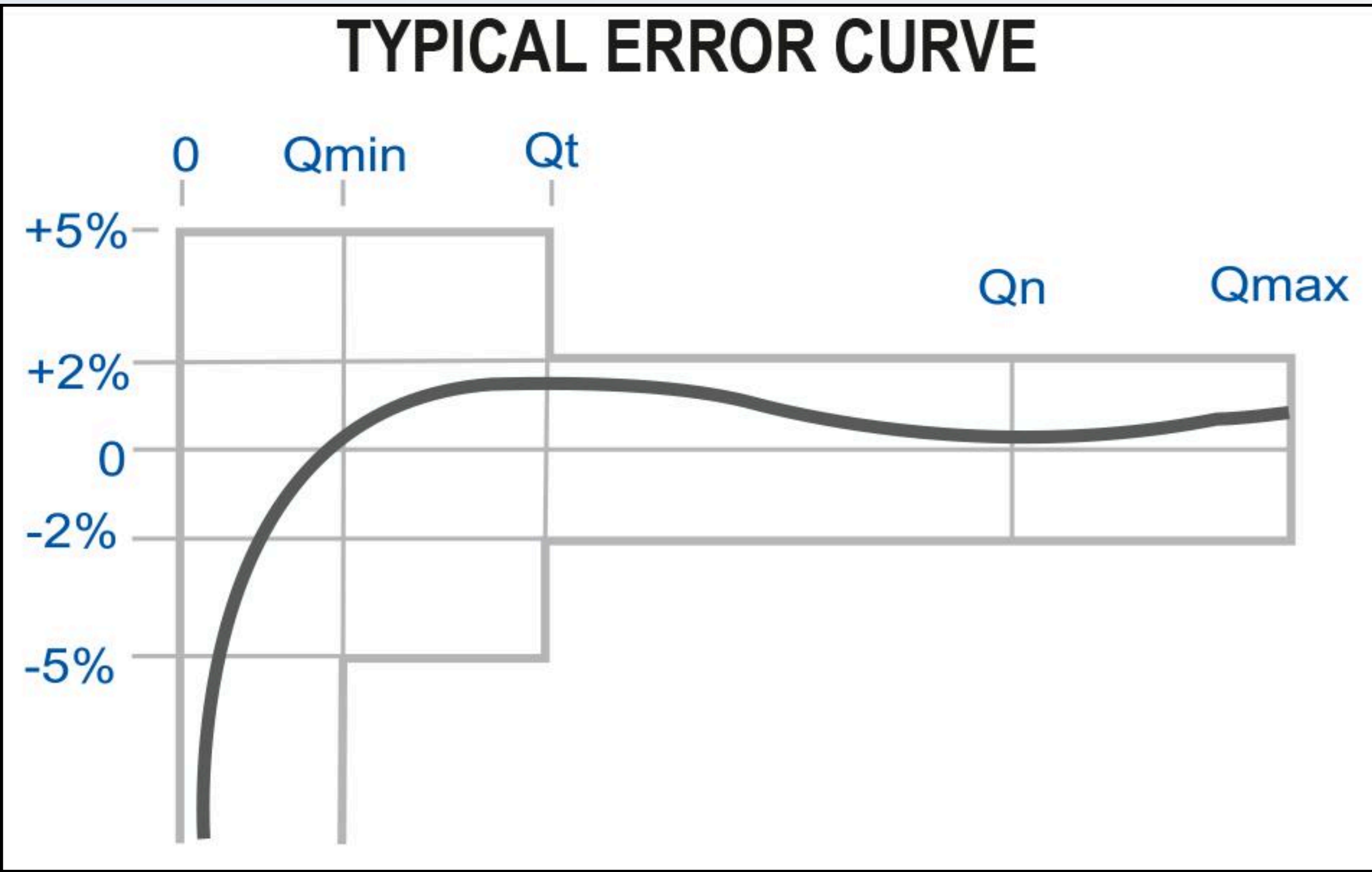
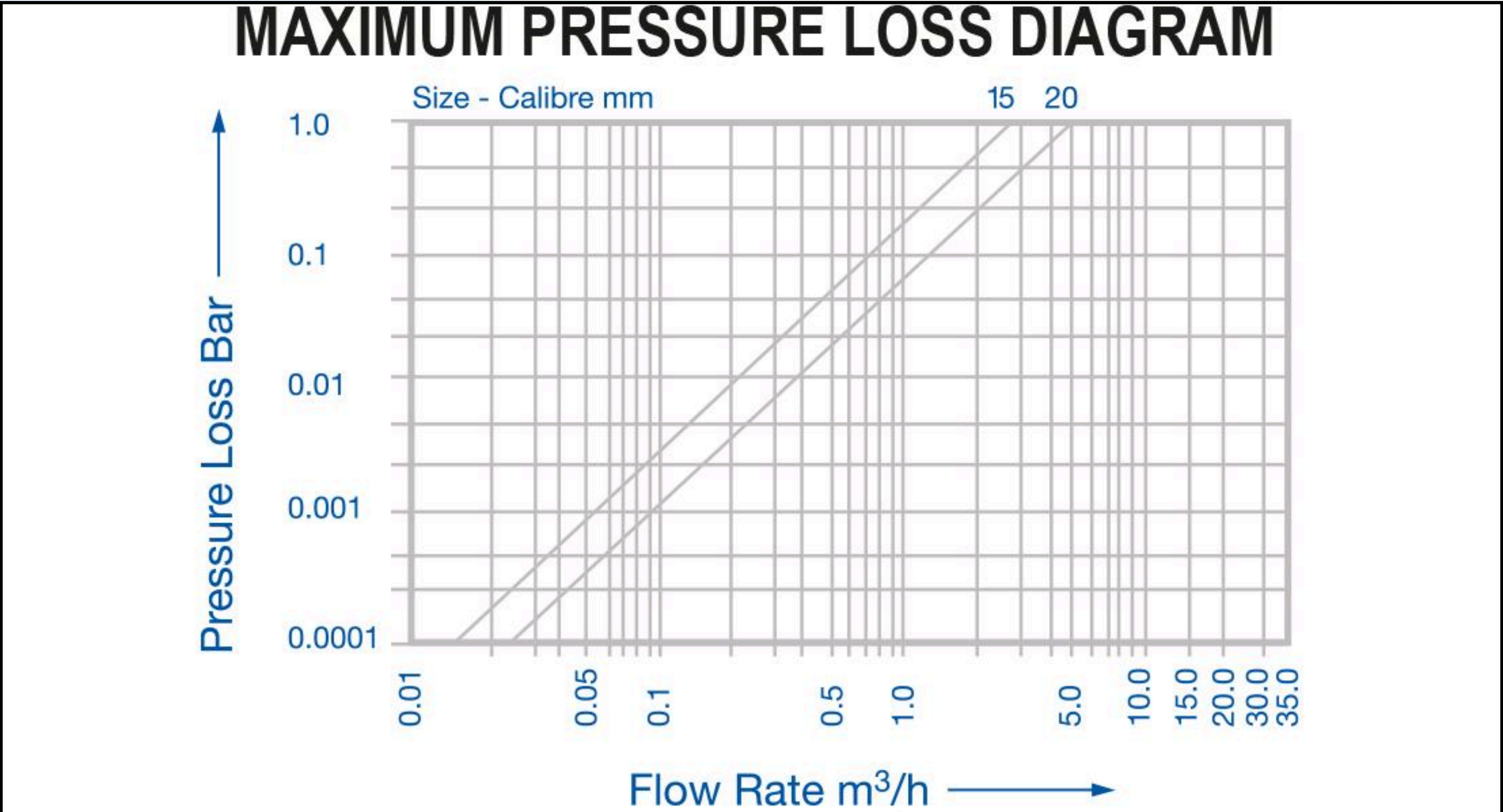


- MID R80 Approved
- Working Pressure: 16 Bar
- 360° Rotating Dial
- For Cold (30°C) Or Hot (90°C) Water
- Brass Body
- 5 Black Rollers (Cubic Metre)
- 3 Red Rollers (Submultiples)
- Pointer Minimum Reading 0.01 Litres
- Sensitivity Index
- Real Performances Exceed EEC & ISO Standards
- Counter Perfectly Sealed (Hermetic)



### Technical Data

Part No.	Dn Size [mm]	Max Flow [m³/h]	Nominal Flow [m³/h]	Trans Flow [L/h]	Min Flow [L/h]	Pulse Options* [litres per pulse]
D15SJ	15	3	1.5	120	30	1-10
D20SJ	20	5	2.5	200	50	1-10



\*Read switch Operates between 0 - 24 vdc. Current max 0.2 amps.



# WATER METERS

## Single Jet – Mid R80



### Term Of Reference:

**Size** (mm) - Refers to inside bore diameter.

**Max Flow Rate** (Q m3/h) - Refers to emergency flow rate in the event of system failure. Damage may result.

**Nominal Flow Rate** (QN m3/h) - Typical application for every day usage.

**Transitional Flow Rate** (L/hr) - Point at which the flow rate is high enough to achieve a level of accurate measurement.

**Minimum Flow Rate** (L/hr) = The absolute minimum flow required for the unit to function.

**EEC approved Class** - The EEC Classification system used to measure accuracy at very low rates.

Standard ISO4064/BS5728/EEC Specification Class B applies.

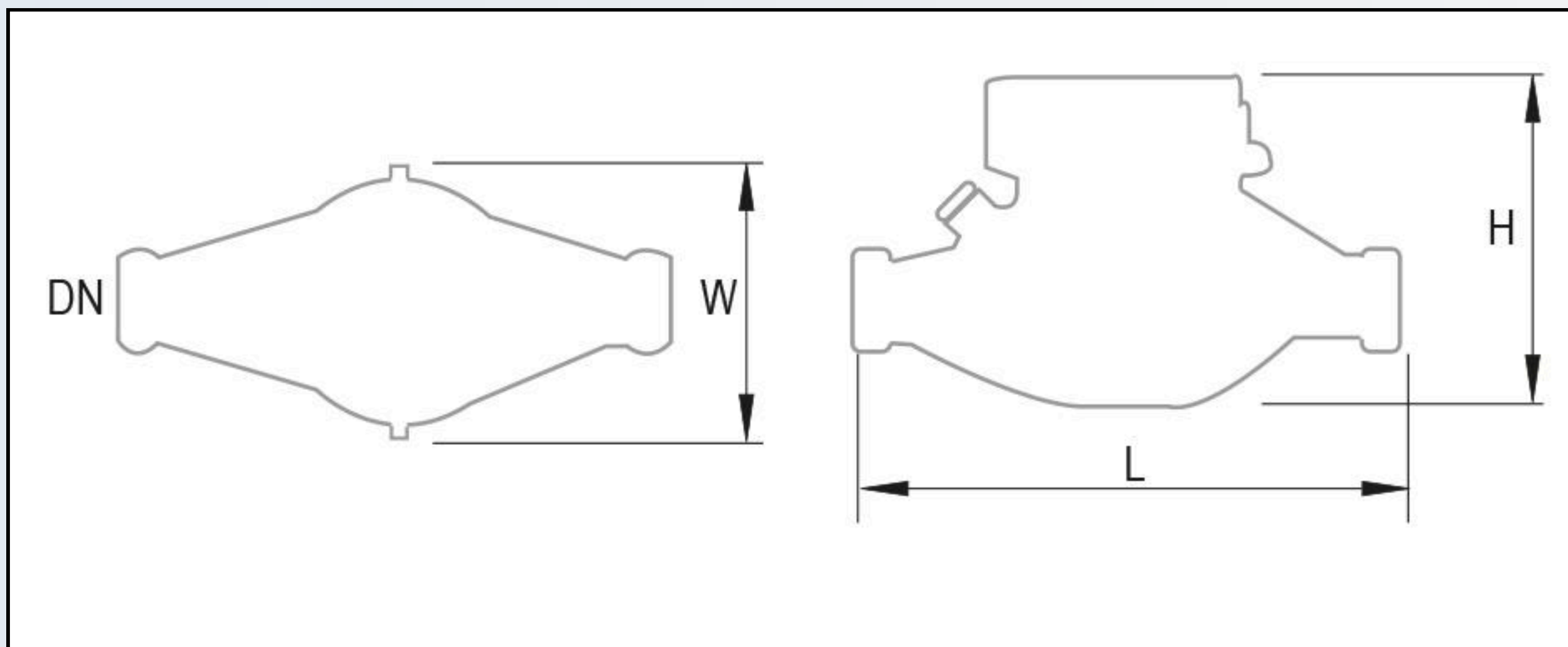
When ordering please state whether for hot or cold use. Suffix Part No. with C (Cold or H (Hoy) and please advise of preferred pulsed output at time of ordering.

Figure apply to both hot and cold meters.

Pressure drops on all sizes are generally below 0.2 bar.

### Dimensions

Part No.	Dn Size [mm]	Body Length [mm]	Length With Couplings [mm]	Height [mm]	Width [mm]	Weight [kg]
D15S]	½" [DN15]	110	204	73	76	0.75
D20S]	¾" [DN20]	130	234	73.5	76	0.80



All sizes are approximate and are given for guidance only.  
Products and specifications may be subject to change from those shown without notice.